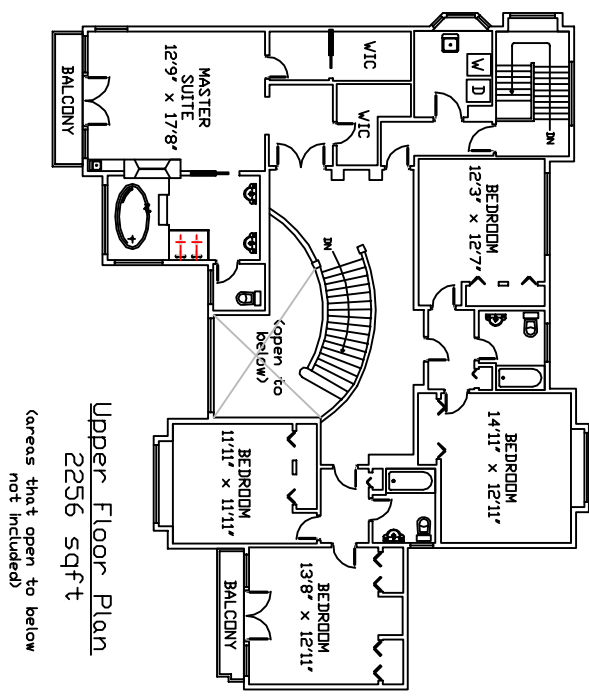
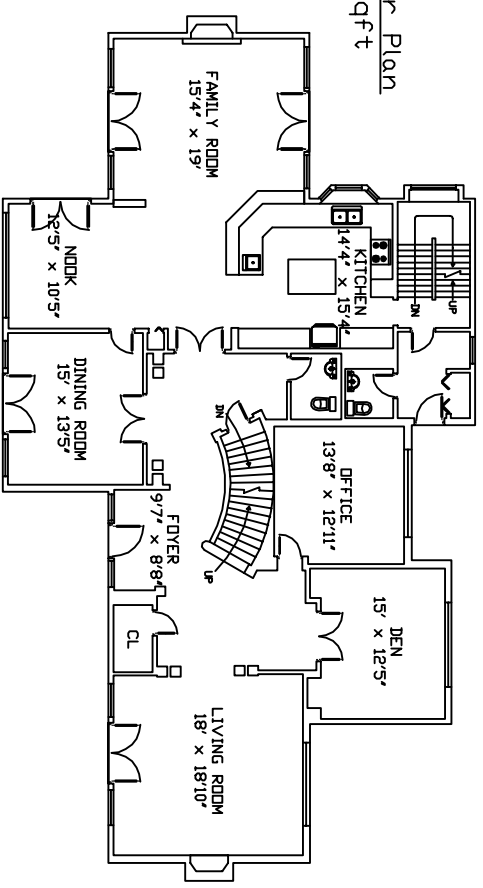
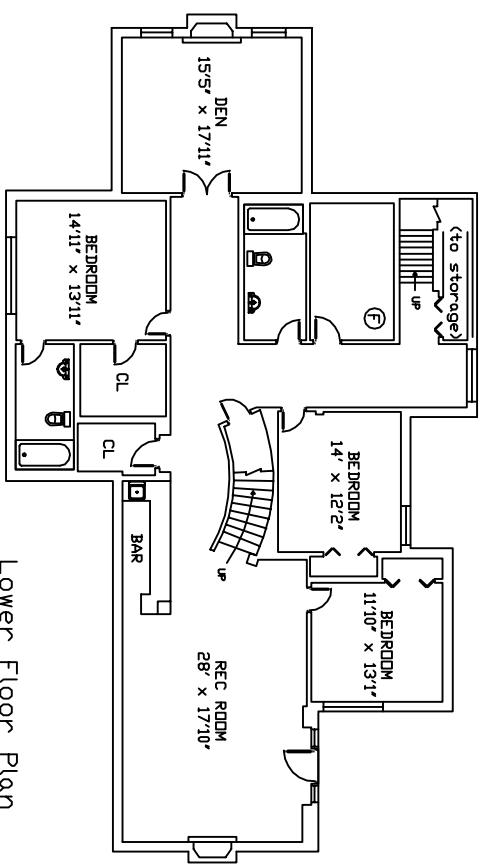


Main Floor Plan
2701 sqft



Upper Floor Plan
2256 sqft
(areas that open to below not included)



Lower Floor Plan
2383 sqft
(furnace room and under-stair storage space not included)

TOTAL FINISHED AREA
7340 sqft

Total floor area calculations are based on measurements taken from the outside surface of the exterior walls.
Individual room dimensions have been calculated based on the largest rectangular space accommodated by the interior surfaces of those walls.
Calculations do not include porches, patios, decks, garages, carports, mechanical and electrical rooms, crawl spaces, and any other unfinished areas.
All measurements are subject to errors not exceeding 20%.

4270 Rockridge Place - West Vancouver



for
Allan Mark Angel
Angel Hsman & Associates
(The Angel Group)
1555 Marine Drive
West Vancouver, B.C.
Tel: 604-921-1188
Fax: 604-921-1199

PROJECT:
4270
Rockridge Place

DRAWING:
All Floors

CONSULTANT:
POINT SOURCE MEDIA
www.pointsourcemedia.ca
604-839-8889

DATE: 16/01/07
SCALE: As shown
DRAWN: Colin Low
CHECKED:
COMMENTS:

NO.	DATE	DETAILS

DRAWING NO.:
0000051

SHEET:	1	of	1
--------	---	----	---