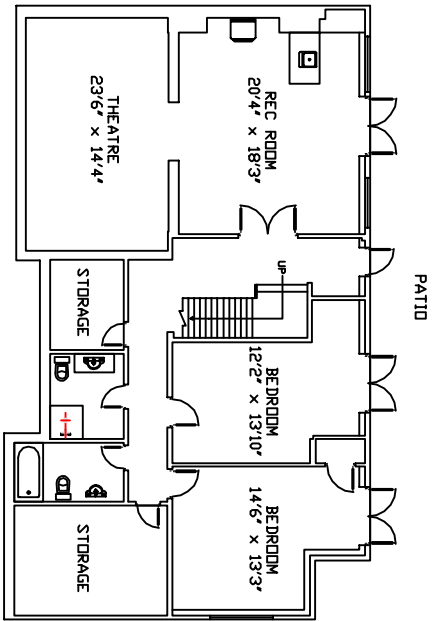
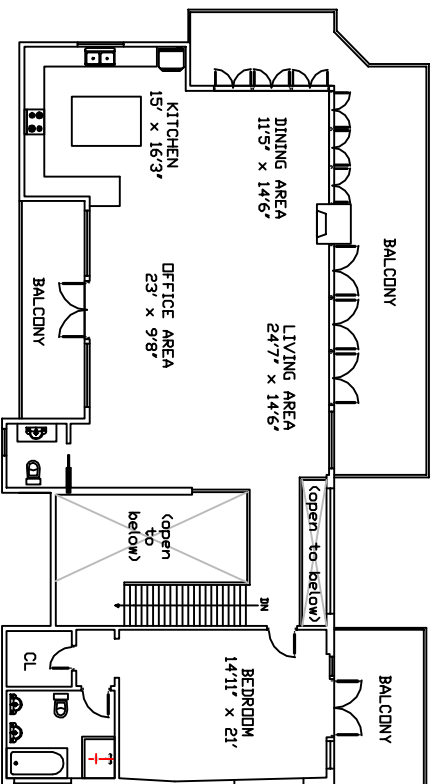


Main Floor Plan
1796 sqft
(garage excluded)



Lower Floor Plan
1898 sqft
(storage rooms excluded)



Upper Floor Plan
1892 sqft

TOTAL FINISHED AREA
5586 sqft

Finished floor area calculations are based on measurements taken from the contractor's original architectural blueprints. Calculations do not include porches, patios, decks, garages, ramps, mechanical and electrical rooms, crawl spaces, and any other unfinished areas. All measurements are subject to errors not exceeding 20%.



for
Allan Mark Angel
Angell Hasrnan & Associates
(The Angell Group)
1555 Marine Drive
West Vancouver, B.C.
Tel: 604-921-1188
Fax: 604-921-1199

PROJECT:
1116
Gilston Road

DRAWING:
All Floors

CONSULTANT:



www.pointsourcemedia.ca
604-839-8889

DATE: 19/09/06
SCALE: As shown
DRAWN: Colin Low
CHECKED:
COMMENTS:

REVISIONS:	
NO.	DATE DETAILS

DRAWING NO.:
0000039

1116 Gilston Road - West Vancouver

SHEET: 1 of 1