

for  
**Allan Mark Angell**  
Angell Hasman & Associates  
(The Angell Group)  
1555 Marine Drive  
West Vancouver, B.C.  
Tel: 604-921-1188  
Fax: 604-921-1199

PROJECT:  
**1328**  
Palmerston Ave.

DRAWING:  
All Floors

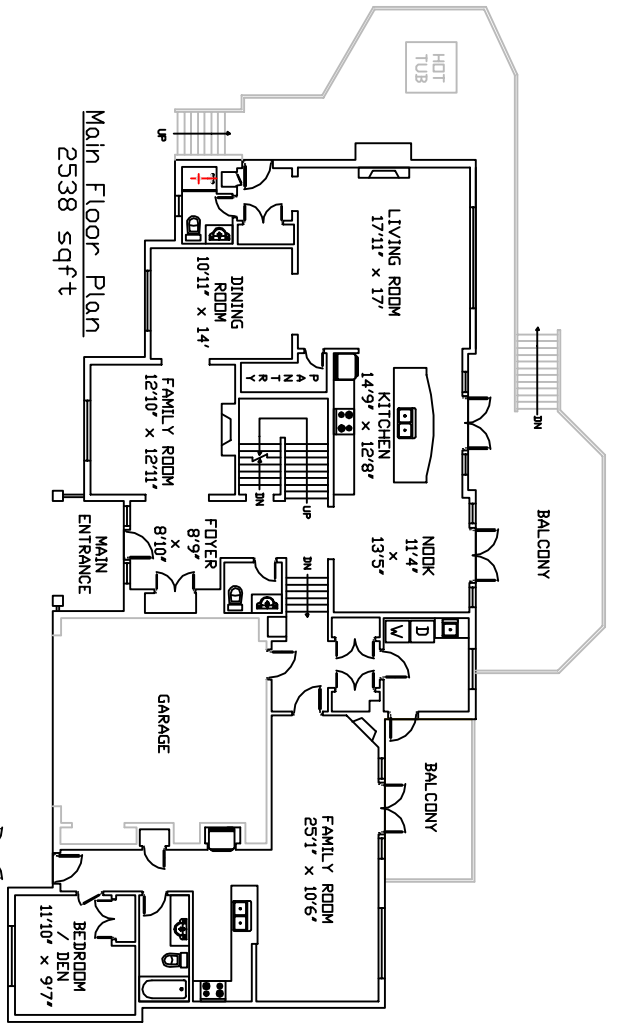
CONSULTANT:  
**pointsourcemedia**  
www.pointsourcemedia.ca  
604-839-8889

DATE: 24/08/07  
SCALE: As shown  
DRAWN: Colen Low  
CHECKED:  
COMMENTS:

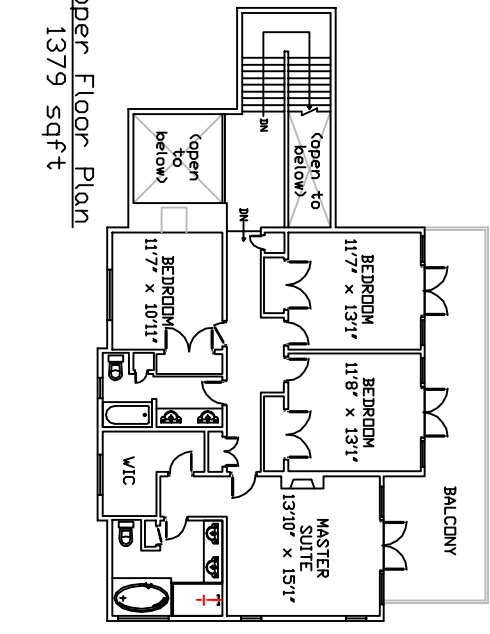
NO.	DATE	DETAILS

DRAWING NO.:  
**0000089**

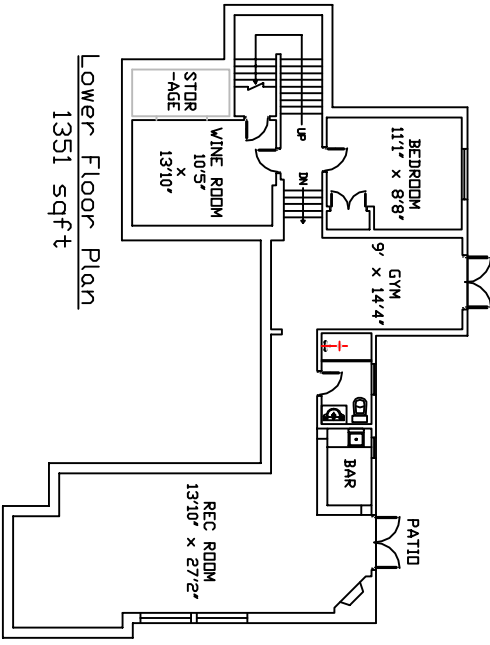
Finished Area: 3917 sqft  
Above Grade: 1351 sqft  
Below Grade: 1351 sqft  
Unfinished Area: 0 sqft  
Above Grade: 173 sqft  
Below Grade: 173 sqft



Main Floor Plan  
2538 sqft



Upper Floor Plan  
1379 sqft



Lower Floor Plan  
1351 sqft

**TOTAL FINISHED AREA**  
5268 sqft

This property was measured using the ANSI Z765 standard. Total floor area calculations are based on measurements taken from the outside surface of the exterior walls. Walls that could not be measured directly have been extrapolated from interior measurements.  
Calculations do not include porches, patios, decks, garages, carports, mechanical and electrical rooms, crawl spaces, and any other unfinished areas.  
Individual room dimensions have been calculated based on the largest rectangular space accommodated by the interior surfaces of those walls.  
For more information, please consult the ANSI Z765 standard.  
All measurements are subject to errors not exceeding 20%.

1328 Palmerston Avenue - West Vancouver